

**City of Pacific
Park Board Commission
MEETING AGENDA
Tuesday, June 15, 2021
6:30 p.m.**

MEMBERS: Kate Hull-Pease, Chairperson; Jim Meier, Gina Lisak, Shawna Carey, Scott Newbold, Regina Ingram

MEMBERS ABSENT:

CITY STAFF: Jack Dodge, Community Development Manager
James Morgan, Public Works Manager
Alyssa Tatro, Associate Planner

Approve Meeting Minutes:

April 20, 2021 & May 15, 2021

Discussion Items:

- 1) **Discussion of Park Tour Results**
- 2) **Outdoor Fit Park Equipment – discuss equipment and potential locations**
- 3) **Park Art – Piano Harp- Choose a Location**
- 4) **Beaver Park Gate**
- 5) **Parks Maintenance Inspections**
- 6) **Adjourn**

The next Regular Park Board Meeting is scheduled for Tuesday July 20, 2021 at 6:30 p.m.

**City of Pacific Park Board
Minutes for April 20, 2021**

Call to Order

Chairperson Hull-Pease called the Regular Meeting to order at 6:40PM

Attendance

Members Present: Chairperson; Kate Hull Pease, Gina Lisak, Shawna Carey, Scott Newbold, Ragina Ingram

Members Absent: Jim Meier

Member Newbold moved to excuse member Meier, seconded by member Lisak; motion approved unanimously.

Member Meier joined the meeting at 6:44

City Staff: Jack Dodge, Community Development Manager; Alyssa Tatro, Associate Planner; Jim Morgan, Public Works Manager; Nicole Schunke, Administrative Assistant

Guest: Mayor Leanne Guier

Approval of Park Board Minutes

The minutes were approved unanimously via Voice Vote

Approval of Agenda

Katie added an item (5) for a presentation by the Mayor, moving adjournment to item 6.

The amended agenda was approved unanimously.

Discussion items

1. Introduction of Ragina Ingram

Chairperson Kate asked Ragina Ingram to introduce herself to the park board.

2. Gate at Beaver Park

Mayor Guier, Jack Dodge, and Jim Morgan spoke about the kiss gate and the different types and styles of gates that can work at Beaver Park.

After discussion Park Board tabled the item for after the Park Board tour.

3. Recommended Park Improvements, Parks Board Priorities for 2021, Preliminary cost estimates

Sunset Park:

Jim Morgan will check in with Park Board in 90 days

Interurban Trail:

\$5,000 for flashing lights

\$3,000 way finding signs

Beaver Park:

Sod during the Fall

Elise Park:

Cost estimate by next meeting

Aspen Park:

Change the 3 trees from quaking aspen to red maples

Otter Park:

Sod during the Fall after Beaver Park

4. Parks Maintenance Inspections, refining summary sheet values

Park Board reviewed the maintenance inspections.

5. Mayor's Presentation

- Mayor Guier said that the Park Board might be able to do everything on their priorities list.
- Mayor Guier also mentioned that she has some Parks & Rec magazines for the Park Board to look at during their park tour.
- War Memorial on the Interurban Trail will be getting funding from the Port of Seattle. The Lions Club, The Veterans of Foreign Wars, and Four Culture are willing to help on the project as well.
- There is a donation of foliage (tree and bushes) has been offered to the Park Board; Park Board will take a look at them during the Park tour.

Adjourn

The meeting was adjourned at 7:44

Next meeting will take place on Tuesday, May 18, 2021 via Zoom Meeting

Minutes prepared by Nicole Schunke, Administrative Assistant

Meeting Minutes Approved

Kate Hull Pease, Commissioner

Date

**City of Pacific Park Board
Minutes for May 18, 2021**

Call to Order

Chairperson Hull-Pease called the Regular Meeting to order at 6:40PM

Attendance

Members Present: Chairperson; Kate Hull Pease, Jim Meier, and Scott Newbold
Members Absent: Gina Lisak, Shawna Carey, and Ragina Ingram

City Staff: Jack Dodge, Community Development Manager; Alyssa Tatro, Associate Planner; Jim Morgan, Public Works Manager; Nicole Schunke, Administrative Assistant

Guest: Rob Paish

Due to three absentees the members present started an unofficial meeting.

Approval of Park Board Minutes

The minutes were unable to be approved due to lack of quorum

Approval of Agenda

The agenda was unable to be approved due to lack of quorum

Discussion items

1. Outdoor Fit Park Equipment – Guest Rob Paish with Outdoor-Fit to discuss

The Park board was unable to make a motion after Rob Paish's demonstration.

2. Discussion of Park Tour Results

Park Board discussed the park tour. Action to follow at the next meeting

3. Park Art – Piano Harp

Jim Morgan gave a mini presentation on what the piano harp would be used for. Action to follow at the next meeting

Adjourn

The meeting was adjourned at 7:38

Next meeting will take place on Tuesday, June 15, 2021 via Zoom Meeting

Minutes prepared by Nicole Schunke, Administrative Assistant

Meeting Minutes Approved

Kate Hull Pease, Commissioner

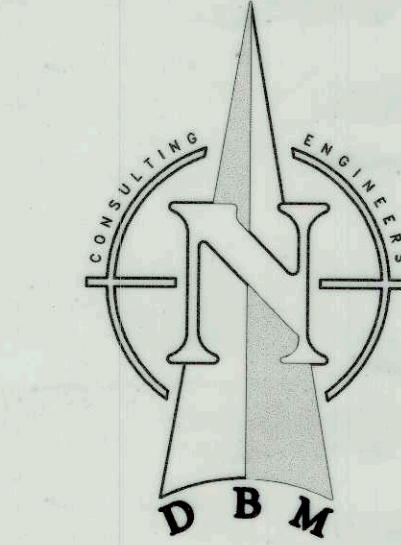
Date

PIANO HARP

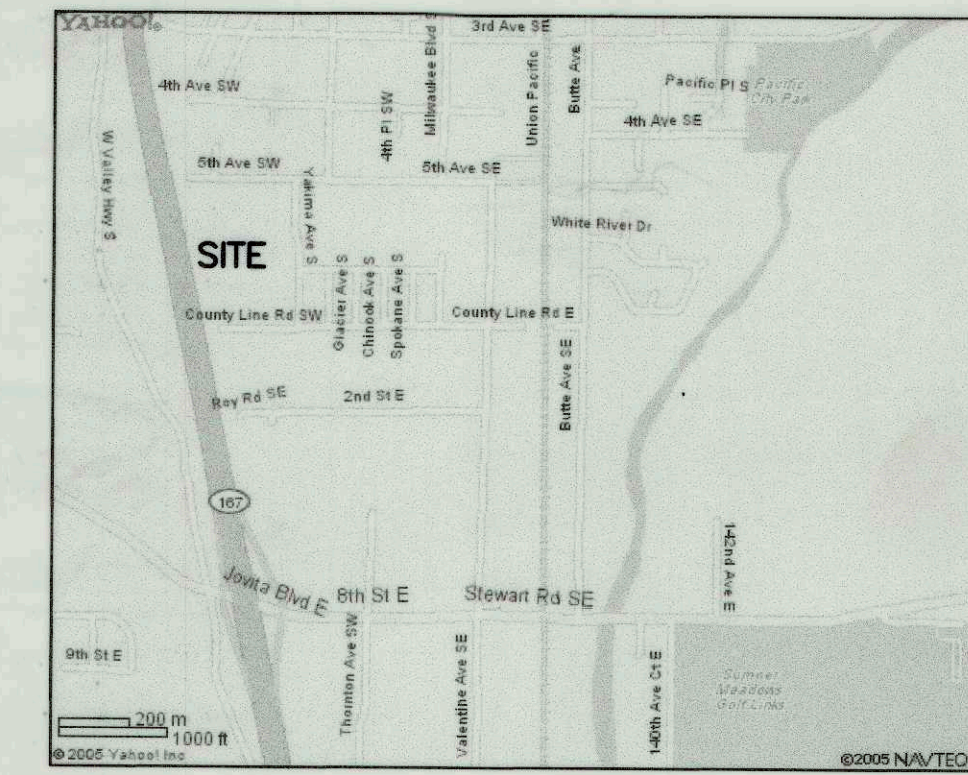


BEAVER MEADOWS

SE 1/4 OF SECTION 35, TOWNSHIP 21 N, RANGE 4 E, W.M.



GRAPHIC SCALE
0 30 60 120
1 inch = 60 feet



VICINITY MAP
NOT TO SCALE

GENERAL NOTES

1. THIS DEVELOPMENT PROJECT SHALL CONFORM TO THE CITY OF PACIFIC'S REQUIREMENTS AND BE IN ACCORDANCE WITH THE APPROVED PLANS. ANY CHANGES FROM THE APPROVED PLAN WILL REQUIRE APPROVAL FROM THE OWNER, ENGINEER AND THE CITY.
2. ALL WORKMANSHIP AND MATERIALS SHALL CONFORM TO THE "WASHINGTON STATE DEPARTMENT OF TRANSPORTATION (WSDOT) STANDARD SPECIFICATIONS FOR ROAD, BRIDGE, AND MUNICIPAL CONSTRUCTION" (2004/LATEST EDITION), EXCEPT WHERE SUPPLEMENTED OR MODIFIED BY THE CITY'S CONSTRUCTION STANDARDS MANUAL. COPIES OF THE ABOVE DOCUMENTS SHALL BE AVAILABLE AT THE JOB SITE DURING CONSTRUCTION.
3. A PRE-CONSTRUCTION MEETING SHALL BE REQUIRED PRIOR TO THE START OF ALL CONSTRUCTION. CONTACT THE PUBLIC WORKS DEPARTMENT AT 253-929-1110 TO SCHEDULE A MEETING.
4. LOCATIONS FOR EXISTING UTILITIES ARE APPROXIMATE. THE CONTRACTOR IS CAUTIONED THAT OVERHEAD UTILITY LINES MAY NOT BE SHOWN ON DRAWINGS. IT SHALL BE THE CONTRACTOR'S RESPONSIBILITY TO DETERMINE THE TRUE ELEVATIONS AND LOCATIONS OF ALL UNDERGROUND UTILITIES AND THE EXTENT OF ANY HAZARD CREATED BY OVERHEAD UTILITY LINES. IDENTIFICATION, LOCATION MARKING AND RESPONSIBILITY FOR, UNDERGROUND FACILITIES OR UTILITIES, IS GOVERNED BY THE PROVISIONS OF CHAPTER 19.122 REVISED CODE OF WASHINGTON (RCW). PRIOR TO STARTING CONSTRUCTION, THE CONTRACTOR SHALL CALL ONE-CALL (1-800-424-5555) FOR UTILITY LOCATIONS (WATER, SANITARY SEWER, STORM SEWER, GAS, POWER, TELEPHONE AND TELEVISION) TWO (2) BUSINESS DAYS BEFORE CONSTRUCTION.
5. PRIOR TO THE START OF CONSTRUCTION A PROPOSED ROUTE AND SCHEDULE FOR HAULING MATERIAL TO THE SITE SHALL BE SUBMITTED TO THE CITY FOR APPROVAL. IF THE CITY BELIEVES THAT THE PROPOSED HAUL ROUTE WILL ADVERSELY IMPACT THE STREET NETWORK, HAULING MAY BE LIMITED TO APPROPRIATE OFF-PEAK HOURS OR ALTERNATE ROUTES.
6. THE CONTRACTOR SHALL BE RESPONSIBLE FOR PUBLIC SAFETY ON AND AROUND THIS PROJECT. PRIOR TO THE START OF WORK, ALL METHODS AND EQUIPMENT USED FOR TRAFFIC CONTROL AND STREET MAINTENANCE SHALL BE SUBMITTED TO THE CITY FOR APPROVAL. CONTRACTORS AND THEIR SURETY SHALL BE LIABLE FOR INJURIES AND DAMAGES TO PERSONS AND PROPERTY SUFFERED BECAUSE OF CONTRACTORS OPERATIONS OR NEGLIGENCE CONNECTED WITH THEM.
7. ALL CONSTRUCTION SURVEYING FOR EXTENSIONS OF PUBLIC FACILITIES SHALL BE DONE UNDER THE DIRECTION OF A WASHINGTON LICENSED LAND SURVEYOR OR A WASHINGTON LICENSED PROFESSIONAL CIVIL ENGINEER.
8. RECORD DRAWINGS ARE REQUIRED PRIOR TO PROJECT ACCEPTANCE. REFER TO THE CITY'S "DEVELOPMENT GUIDELINES FOR PUBLIC WORKS STANDARDS".

TABLE OF CONTENTS

COVER PAGE	1
SITE PLAN	2
ROUGH GRADING, T.E.S.C. & DEMOLITION PLAN	3
SITE GRADING PLAN	4
INTERSECTION PLAN	5
COMPOSITE UTILITY PLAN	6
ROAD & STORM DRAINAGE PLAN & PROFILE STREET A	7
ROAD & STORM DRAINAGE PLAN & PROFILE STREET D	8
ROAD & STORM DRAINAGE PLAN & PROFILE STREET C	9
ROAD & STORM DRAINAGE PLAN & PROFILE STREET B	10
SEWER & WATER, PLAN & PROFILE STREET A	11
SEWER & WATER, PLAN & PROFILE STREET D	12
SEWER & WATER, PLAN & PROFILE STREET C	13
SEWER & WATER, PLAN & PROFILE STREET B	14
FRONTAGE IMPROVEMENTS, YAKIMA AVE. S. 5TH AVE. SW	15
T.E.S.C.P. DETAILS	16
SEWER DETAILS	17
STREET DETAILS	18
STORM DETAILS	19

LEGAL DESCRIPTION

THAT PORTION OF THE NORTH 1/2 OF THE SOUTH 1/2 OF THE SOUTHWEST 1/4 OF THE SOUTHEAST 1/4 OF SECTION 35, TOWNSHIP 21 NORTH, RANGE 4 EAST, WILLAMETTE MERIDIAN, KING COUNTY, WASHINGTON, LYING EASTERLY OF A 100 FOOT WIDE STRIP OF LAND PER SC 82340;

EXCEPT THAT PORTION DEEDED TO THE CITY OF PACIFIC PER REC. #8811290822.

AND, THAT PORTION OF THE SOUTH 1/2 OF THE NORTH 1/2 OF THE SOUTHWEST 1/4 OF THE SOUTHEAST 1/4 OF SECTION 35, TOWNSHIP 21 NORTH, RANGE 4 EAST, WILLAMETTE MERIDIAN, KING COUNTY, WASHINGTON LYING EASTERLY OF A 100 FOOT WIDE STRIP OF LAND PER SC 82340;

EXCEPT ACCESS ROAD NO. 1, RELINQUISHED TO THE CITY OF PACIFIC.

VERTICAL DATUM

NOV029 BASED ON ELEV. OF 60.14 ON MONUMENT LOCATED AT THE INTERSECTION OF TACOMA BLVD S AND 5TH AVE SW PER PROVIDED TOPOGRAPHIC SURVEY BY DRYCO SURVEYING, INC.

BASIS OF BEARINGS

N00°24'26"E ALONG MONUMENTAL CENTERLINE OF YAKIMA AVE S AS SHOWN OF RECORD OF SURVEY (ROS) UNDER REC. NO. 20040301900010, KING CO. WA.

HORIZONTAL DATUM

ASSUMED PER ROS

DETENTION/WATER QUALITY POND INFORMATION

PERMANENT DETENTION AND WATER QUALITY FOR THE PROJECT WILL BE PROVIDED AT THE REGIONAL FACILITY LOCATED TO THE SOUTH OF THE PROJECT. A TEMPORARY SEDIMENT POND WILL BE PROVIDED ON SITE DURING CONSTRUCTION TO HANDLE STORM RUNOFF.

BOUNDARY AND TOPOGRAPHIC INFORMATION OBTAINED FROM A SURVEY PERFORMED BY DRYCO SURVEYING, INC. ON OCT. 20, 2004. DBM CONSULTING ENGINEERS DOES NOT HOLD ANY RESPONSIBILITY FOR INFORMATION RELATIVE TO THIS SURVEY.

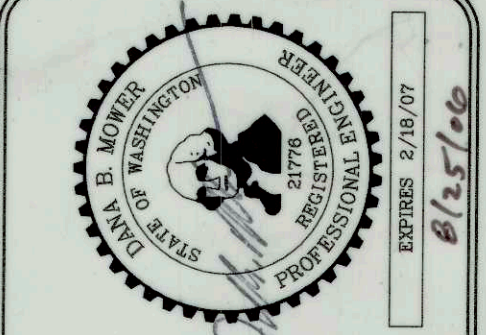
CONSULTANTS

OWNER A-2 VENTURE LLC 136 STEWART ROAD SE, STE 1-J PACIFIC, WA 98047 OFFICE (253) 862-6511 CONTACT: SCOTT HAYMOND	ENGINEER DBM CONSULTING ENGINEERS 502 16TH STREET NE, SUITE 312 AUBURN, WA 98002 OFFICE (253) 887-0924 CONTACT: BRANDON MCDOWELL	SURVEYOR DRYCO SURVEYING, INC. 12714 VALLEY AVE SUMNER, WA 98390 OFFICE (253) 826-0300 CONTACT: PHIL SARGENT
--	---	---

CITY OF PACIFIC APPROVED FOR CONSTRUCTION

CITY ENGINEER - CITY OF PACIFIC <i>[Signature]</i>	DATE 8/28/2006
COMMUNITY DEVELOPMENT DIRECTOR CITY OF PACIFIC <i>[Signature]</i>	DATE 8/29/06

These drawings are approved for construction for a period of 12 months from the date shown hereon. On the city reserves the right to make revisions, additions, deletions, or modifications should construction be delayed beyond this time limitation, or the approved drawings are found to be in error, or if field changes (as approved by the city) warrant the same. The city, by approving these documents, in no way warrants their accuracy or acknowledges omissions.



BEAVER MEADOWS

COVER PAGE

CITY OF PACIFIC, WA

SCOTT HAYMOND
A-2 VENTURE LLC
136 STEWART ROAD SE, SUITE 1-J
PACIFIC, WA 98047
(253) 862-6511

FOR:

DBM
CONSULTING ENGINEERS
502 16TH STREET NE, SUITE 312 AUBURN, WA 98002
OFFICE (253) 887-0924 FAX (253) 887-0925

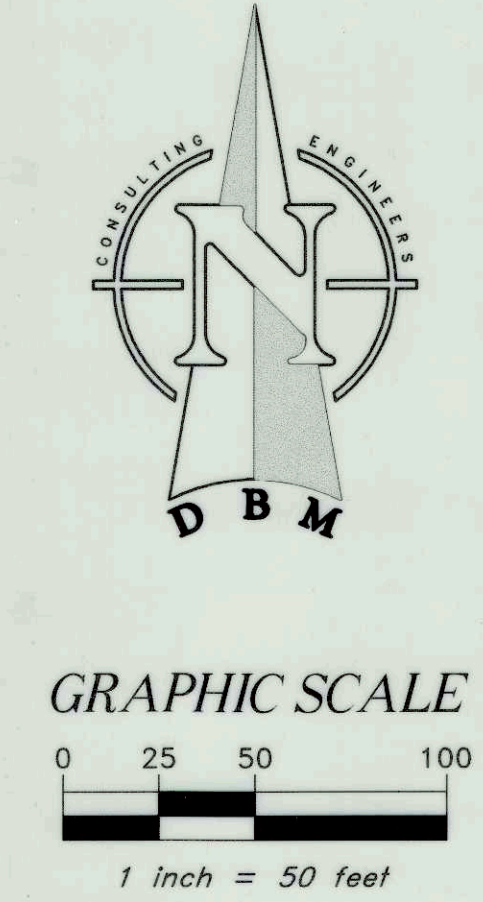
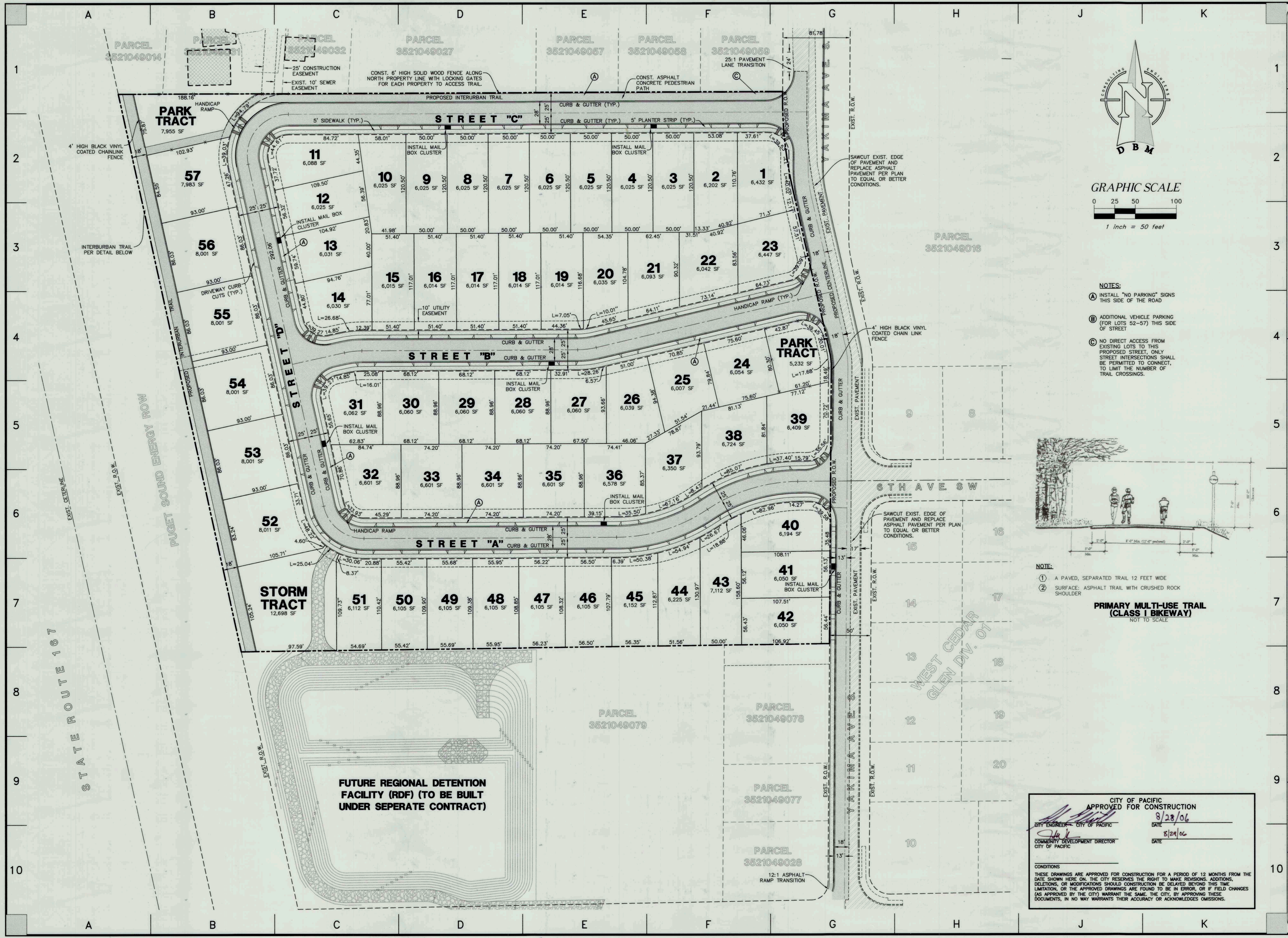
DESIGNED BY: B. MCDOWELL	DRAWN BY: B. MCDOWELL	CHECKED BY: B. MCDOWELL	APPROVED BY: D. MOWER	DATE: 8/25/06
-----------------------------	--------------------------	----------------------------	--------------------------	------------------

SHEET
1
OF 20
JOB NO.
05003

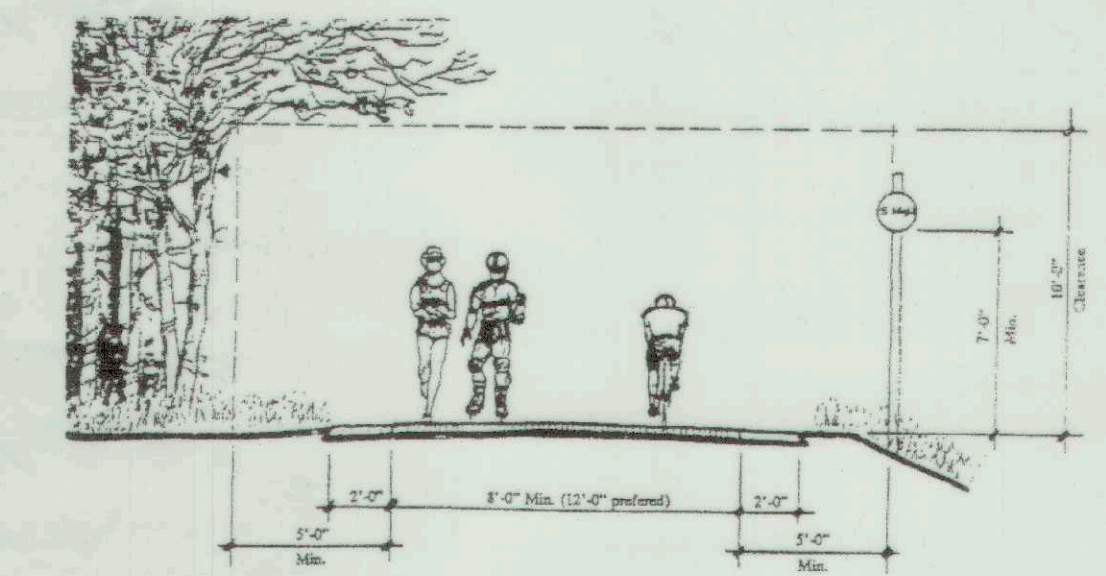
© DBM CONSULTING ENGINEERS, 2006
THIS DOCUMENT AND THE INFORMATION CONTAINED HEREIN IS PROPRIETARY TO DBM. ALL COPYRIGHTS ARE RETAINED. GOVERNMENT JURISDICTIONS ARE HEREBY AUTHORIZED TO COPY AND OTHERWISE USE THIS INFORMATION FOR THEIR BENEFIT. RELEASE OF THIS INFORMATION TO ANY NON-GOVERNMENT PERSONNEL IS NOT AUTHORIZED. THE RECIPIENT IS NOT TO COPY, DUPLICATE, OR DISCLOSE THE CONTENTS TO ANY PERSON OR ENTITY EXCEPT AS EXPRESSLY AUTHORIZED BY S&D AGREEMENT OR BY DBM IN WRITING.

CALL TWO WORKING DAYS
BEFORE YOU DIG
1-800-424-5555
UTILITIES UNDERGROUND LOCATION CENTER

\\naserver\data\Jobs Files\2009\05003_Civil\ACAD\05003-consulting.dwg SITE PLAN, 8/28/2006 11:41:23 AM, bmcowell



- NOTES:
- (A) INSTALL "NO PARKING" SIGNS THIS SIDE OF THE ROAD
 - (B) ADDITIONAL VEHICLE PARKING (FOR LOTS 52-57) THIS SIDE OF STREET
 - (C) NO DIRECT ACCESS FROM EXISTING LOTS TO THIS PROPOSED STREET. ONLY STREET INTERSECTIONS SHALL BE PERMITTED TO CONNECT, TO LIMIT THE NUMBER OF TRAIL CROSSINGS.



- NOTE:
- (1) A PAVED, SEPARATED TRAIL 12 FEET WIDE
 - (2) SURFACE: ASPHALT TRAIL WITH CRUSHED ROCK SHOULDER
- PRIMARY MULTI-USE TRAIL (CLASS I BIKEWAY)**
NOT TO SCALE

CITY OF PACIFIC APPROVED FOR CONSTRUCTION	
DESIGNED BY: B. MCDOWELL	DATE: 8/28/06
DRAWN BY: B. MCDOWELL	DATE: 8/28/06
CHECKED BY: B. MCDOWELL	DATE:
APPROVED BY: D. MOWER	DATE: 8/25/06
COMMUNITY DEVELOPMENT DIRECTOR CITY OF PACIFIC	
CONDITIONS THESE DRAWINGS ARE APPROVED FOR CONSTRUCTION FOR A PERIOD OF 12 MONTHS FROM THE DATE SHOWN HERE ON. THE CITY RESERVES THE RIGHT TO MAKE REVISIONS, ADDITIONS, DELETIONS, OR MODIFICATIONS SHOULD CONSTRUCTION BE DELAYED BEYOND THIS TIME LIMITATION, OR THE APPROVED DRAWINGS ARE FOUND TO BE IN ERROR, OR IF FIELD CHANGES (AS APPROVED BY THE CITY) WARRANT THE SAME. THE CITY, BY APPROVING THESE DOCUMENTS, IN NO WAY WARRANTS THEIR ACCURACY OR ACKNOWLEDGES OMISSIONS.	

SITE PLAN

TITLE: **BEAVER MEADOWS**

FOR: **SCOTT HAYMOND A-2 VENTURE LLC**
136 STEWART ROAD SE, SUITE 1-J
PACIFIC, WA 98047
(253) 862-6511

DBM
CONSULTING ENGINEERS
502 16TH STREET N.E., SUITE 312 AUBURN, WA 98002
OFFICE (253) 887-0924 FAX (253) 887-0925

DESIGNED BY: B. MCDOWELL	DATE: 8/28/06
DRAWN BY: B. MCDOWELL	DATE: 8/28/06
CHECKED BY: B. MCDOWELL	DATE:
APPROVED BY: D. MOWER	DATE: 8/25/06

SHEET **2** OF **20**

JOB NO. **05003**

PARK INSPECTION SUMMARY FOR PARK BOARD

Inspection Items by Park Maintenance Lead

Vandalism-damage, graffiti, glass, trash, needles	Wood rotten, cracked, missing	Surfacing material
Loose or missing hardware	Remove foreign objects - chains, ropes, wood	Swings
Chains kinked, twisted, broken	Sweep walkways, platforms, steps	Climbers
Guardrails and handrails	Concrete footers exposed	Slides
Seats - cut, cracked, missing	Standing water	

PARK INSPECTIONS: April 16 - Jun 14, 2021

TALLY OF "GOOD" FOUND IN EACH PARK

average of each park

	16-Apr	20-Apr	23-Apr	26-Apr	30-Apr	3-May	7-May	10-May	14-May	17-May	red=below average
ASPEN	-	16	15	14	16	16	16	16	16	16	15.667
BEAVER	16	14	15	14	15	15	14	15	14	15	14.700
BLUEBERRY	15	14	14	14	15	14	15	14	14	14	14.300
C STEIGER	15	14	14	14	15	14	14	14	14	14	14.200
ELISE	14	15	15	14	15	14	14	15	15	14	14.500
MILWAUKEE	15	15	15	14	15	15	15	15	15	15	14.900
OTTER	16	18	15	14	16	16	16	16	17	16	16.000
RHUBARB	16	16	15	15	15	15	15	15	15	15	15.200
STRAWBERRY	15	14	15	14	15	14	15	14	14	14	14.400
SUNSET	15	15	15	15	16	15	15	15	16	15	15.200
	average all= 14.907										
CITY	18	17	17	16	17	16	17	16	18	17	16.900
TRAIL											#DIV/0!

NOTES

		funded	amount
ASPEN			
BEAVER			
BLUEBERRY			
CITY	Graffiti, standing water, replace bucket swings, fix rim on bball court		
C. STEIGER			
ELISE			
MILWAUKEE			
OTTER			
RHUBARB			
STRAWBERRY			
SUNSET	Sidewalk too close to structure		
TRAIL			
OTHER			
TOTALS		0	\$0

PARK BOARD RESPONSE

Number of parks 10

TOTAL "GOODS"	INSPECT-ION COUNT	AVERAGE
141	9	15.667
147	10	14.700
143	10	14.300
142	10	14.200
145	10	14.500
149	10	14.900
160	10	16.000
152	10	15.200
144	10	14.400
152	10	15.200
169	10	16.900
0	0	#DIV/0!
1644	109	15.083
TOTAL "GOODS" PER PARK	TOTAL INSPECT-IONS	GRAND AVERAGE

NOTES: Do not include trash, garbage, or litter

PARK INSPECTION SUMMARY FOR PARK BOARD

Inspection Items by Park Maintenance Lead

Vandalism-damage, graffiti, glass, trash, needles	Wood rotten, cracked, missing	Surfacing material
Loose or missing hardware	Remove foreign objects - chains, ropes, wood	Swings
Chains kinked, twisted, broken	Sweep walkways, platforms, steps	Climbers
Guardrails and handrails	Concrete footers exposed	Slides
Seats - cut, cracked, missing	Standing water	

PARK INSPECTIONS: May 21 - June 11, 2021

TALLY OF "GOOD" FOUND IN EACH PARK

average of each park

	21-May	24-May	24-May	27-May	1-Jun	3-Jun	7-Jun	11-Jun	Week		red=below average
ASPEN	16	15	15	16	16	15	15	16			15.500
BEAVER	14	16	16	19	17	16	15	14			15.875
BLUEBERRY	14	14	14	14	14	14	14	14			14.000
CITY	16	16	16	16	16	15	16	15			15.750
C STEIGER	14	14	14	14	14	14	14	14			14.000
ELISE	15	15	15	14	14	14	14	15			14.500
MILWAUKEE	15	15	15	15	15	15	15	14			14.875
OTTER	16	18	18	16	16	15	15	15			16.125
RHUBARB	15	15	15	14	15	14	15	14			14.625
STRAWBERRY	15	14	14	15	15	14	14	15			14.500
SUNSET	15	16	16	15	15	16	16	15			15.500
	average all= 15.023										
											#DIV/0!
TRAIL											#DIV/0!

NOTES

		funded	amount
ASPEN			
BEAVER	Bench missing bolt. Repaint slide.		
BLUEBERRY			
CITY	Standing water is problematic.		
C. STEIGER			
ELISE			
MILWAUKEE			
OTTER			
RHUBARB			
STRAWBERRY			
SUNSET	Replace cement walkway w/ rubber. Sidewalk too close.		
TRAIL			
OTHER			
TOTALS		0	\$0

PARK BOARD RESPONSE

Number of parks 11

1
2
3
4
5
6
7
8
9
10
11
12

TOTAL "GOODS"	INSPECT-ION COUNT	AVERAGE
124	8	15.500
127	8	15.875
112	8	14.000
126	8	15.750
112	8	14.000
116	8	14.500
119	8	14.875
129	8	16.125
117	8	14.625
116	8	14.500
124	8	15.500
0	0	#DIV/0!
0	0	#DIV/0!
1322	88	15.023
TOTAL "GOODS" PER PARK	TOTAL INSPECT-IONS	GRAND AVERAGE

NOTES: Do not include trash, garbage, or litter